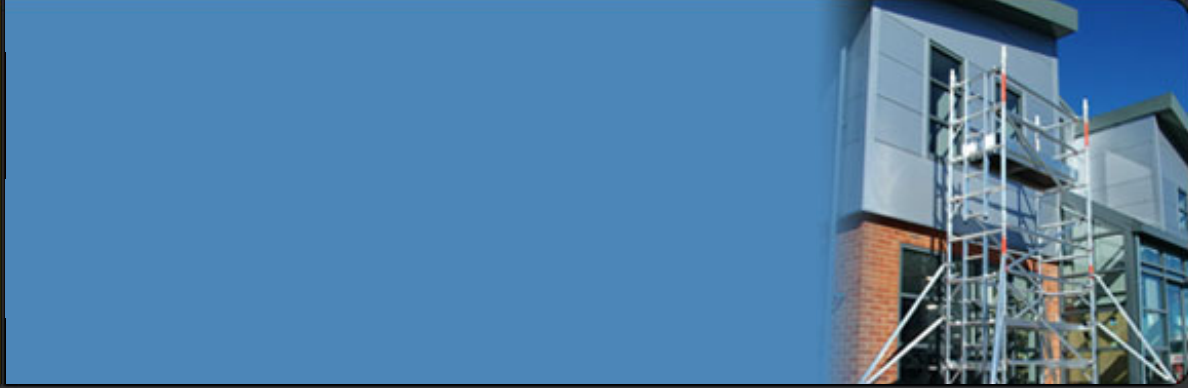




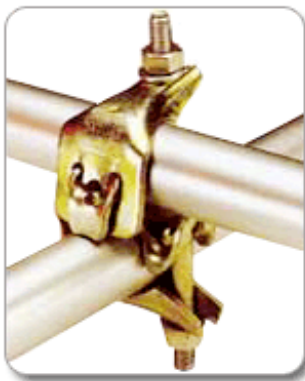
[www.hobo.in](http://www.hobo.in)



## Our Products

## PRESSED STEEL FITTINGS

Our products are designed for fast, efficient on-site installation. Zinc-coated and chrome passivated (unless otherwise indicated on this website), for maximum corrosion prevention, they require virtually no maintenance. Additionally, all scaffold fittings are supplied with fully captive nuts. All our scaffold fittings are designed to accommodate British Standard 48.3mm O/D scaffold tube, unless otherwise stated. We operate a rigorous quality assurance policy. All products are produced in accordance with British and European standards and manufactured to the requirements of EN ISO 9001.



### PRESSED DOUBLE COUPLER (BOULTEN TYPE)

- ☒ A self-gripping wrapping facility which provides a strong positive grip when connecting standards to ledgers.
  - ☒ **Weight:** 0.91kg
  - ☒ Maximum safe working loads to BS5973 Slip along tube: 6.3kN
  - ☒ Conforms to BS1139 Part 2 1982



### PRESSED DOUBLE COUPLER (PRESCO TYPE)

- ☒ **Size:** 48 mm & 51 mm
- ☒ **Min. Slip Load:** 12.5 KN.
- ☒ **Min. Distortion Load:** 17 KN.



### SWIVEL COUPLER (BOULTEN TYPE)

A tough positive grip enabling two tubes to be connected together at any angle, especially for use in cross bracing.

- ⊗ **Weight:** 1.02kg Maximum safe working loads to BS5973.
- ⊗ **Slip along tube:** 6.3kN. Conforms to BS1139 Part 2 1982



### SWIVEL COUPLER (PRESCO TYPE)

- ⊗ **Size:** 48 mm & 51 mm
- ⊗ **Min. Slip Load:** 12.5 KN.
- ⊗ **Min. Distortion Load:** 17 KN.



### PUTLOG COUPLER

For rapid erection or dismantling of putlogs and transoms. featuring a special one piece "wrap-over".

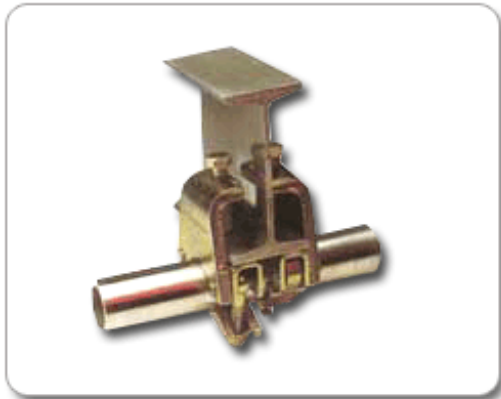
- ⊗ **Weight:** 0.77kg Maximum safe working loads to BS5973.
- ⊗ **Slip along tube:** 0.53kN Conforms to BS1139 Part 2 1982



### PUTLOG COUPLER

For rapid erection or dismantling of putlogs and transoms. featuring a special one piece "wrap-over".

- ⊗ **Weight:** 0.77kg Maximum safe working loads to BS5973.
- ⊗ **Slip along tube:** 0.53kN Conforms to BS1139 Part 2 1982



**Gravlock Girder Coupler 1**



**Gravlock Girder Coupler 2**

### Gravlock Girder

For fast secure coupling of tube to 'I' beam flanges up to 45mm thick whilst comfortably exceeding the BS1139 slip requirements.

NB must always be used in pairs.

Weight: 1.47kg

Maximum safe working loads to BS5973 Slip of coupler along section 10kN

Slip of tube through coupler 6.5kN

Hanging load vertically 30kN All loads are based on PAIRS of Gravlock® uniformly and concentrically loaded.



**FENCE COUPLER R 1**



**FENCE COUPLER 2**

### FENCE COUPLER

As strong, high quality coupler designed to secure metal fencing panel uprights together. Weight: 0.65kg



**FIXED FINIAL COUPLER**

For a secure 90° handrail connection. Weight: 0.81kg



**Single Coupler**

Enables scaffold tube to be connected to a permanent fixture.

Available pierced or unpierced.

Pierced Weight: 0.46kg

Unpierced Weight: 0.47kg



### Stair Tread Bracket

Designed with integral swivel coupling for quick fixing of stair treads which can be adjusted from 28° to 90°.

Weight: 1.44kg Finish: zinc coated and chrome passivated

### Stair Case Coupler



### Joint Pin

Designed for internal 'end-to-end' connection of standard scaffold tube.

Weight: 0.85kg

Conforms to BS1139 Part 2 1982



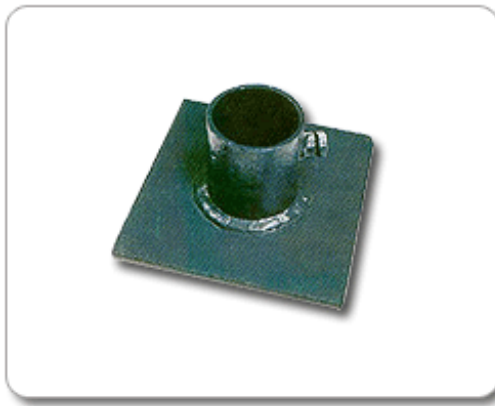
### Roofing Coupler

Designed for 'hole-free' rapid clamping of scaffold tube above and below corrugated sheeting.

Weight: 1.41kg

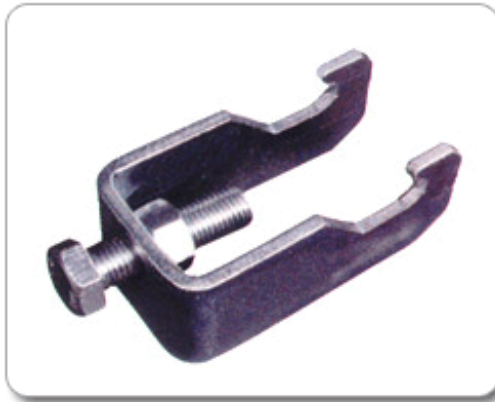
### Roofing Coupler

The galvanised steel or plastic coated sheet has a corrugation pitch of 76.2mm and thickness of 0.5mm to 0.7mm



**Fixed Base Plate (Socket Type)**

Made out of 150 x 150 x 6 mm base plate with 75 mm socket designed to receive 48.3 mm OD tube.



**Patent Clamp**

This is a highly economical fitting for fastening scaffolding tubes to girders with a single bolt. Suitable for loads at right angles to flanges only. Must be used in pairs.

|                  |  |
|------------------|--|
| Telephone Number | +91-161-2676886 , 2677656  |
| Mobile Number    | +91-98724-07650  |
| Fax Number       | +91-161-2675866 , 2676866  |
| E-mail           | info@hobo.in   |
| Website          | <a href="http://www.hobo.in">http://www.hobo.in</a>                              |
| Postal Address   | <b>CAYMAN INTERNATIONAL</b><br>D-142, Phase V, Focal Point,<br>Ludhiana (India). |